

DOUBLESTAR

CREATE THE NO.1 BRAND OF SAFE PCR TIRES IN THE WORLD



Doublestar Tire



Doublestar Tire



Doublestar Tire

QINGDAO DOUBLESTAR OVERSEAS TRADING CO., LTD.

NO.5, Wenling Rd., Laoshan District, Qingdao, China

www.doublestartyre.com

PCR CATALOGUE



Brief Introduction of Doublestar Group

- A centurial rubber enterprise founded in 1921
- Create the NO.1 Brand of Safe PCR Tires in the World
- Top 500 Brand in Asia

As a nearly century-old rubber enterprise and the only state-owned listed company in tire industry of Shandong Province, Doublestar started a new journey of "Fulfilling Second Undertaking & Creating Doublestar A World Famous Brand" in 2014. Persisting the tenet of "First, Open & Innovation", Doublestar is becoming an international enterprise group on the integration of tire manufacturing, intelligent equipment, intelligent logistics (Robot, cold-chain logistics, airport logistics) and intelligent cyclic utilization of wasted rubber as well as plastic.

In recent years, following the strategic deployment of Qingdao municipal party committee and municipal government, Doublestar completed environmental relocation and fulfilled the conversion from New Normal to New Strong State. Under the background of Internet+, Made in China 2025 and State-owned Enterprise Reform, Doublestar regenerates itself like the nirvana of phoenix. It closed down over 60% of backward production facilities and products, accelerated the conversion from old kinetic energy into new kinetic energy, and thus fulfilled the transformation from Sweat Enterprise to Intellectual Enterprise.

Furthermore, Doublestar takes the lead in innovating a management model of "Marketing Segmentation, Organization Platform, Operation Unit" in tire industry. As the first one to achieve all process operation of Industry 4.0 smart factory and the first one to create open ecosystem of Service 4.0 and Industry 4.0, Doublestar completed intelligent transformation and wins numerous awards. In three consecutive years, Doublestar was rated as



★ Doublestar Global Technology & Demand Innovation Center ▼

"Industrial Brand Cultivation Model Enterprise", "Technology Innovation Model Enterprise", "National Quality Bench-marking Enterprise", "Green Tire Pilot Intelligent Manufacturing Model Enterprise" and "Service-oriented Manufacturing Model Enterprise", which makes it the only one among all Chinese enterprises to gain the five national honors authorized by Chinese Ministry of Industry and Information Technology in recent five years, and the only model enterprise of the whole industrial chain from the brand, technology, quality, manufacturing, service.

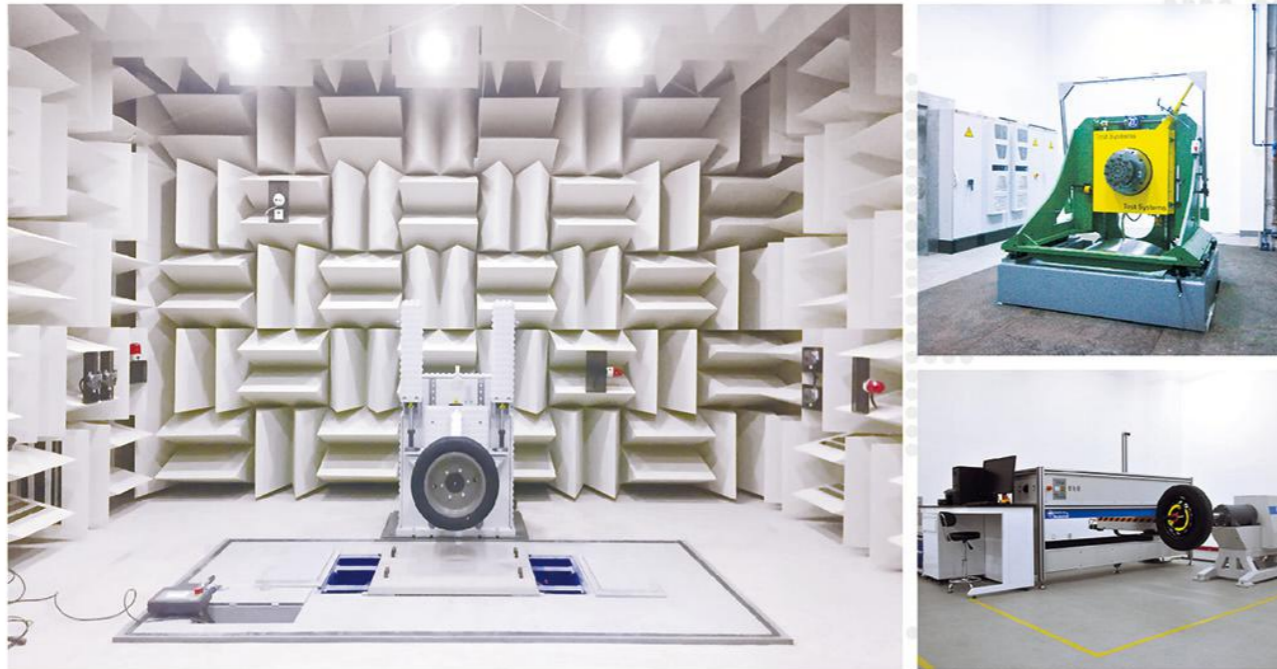


★ National proving ground ▼

The World's First "Industry 4.0" Smart Tire Factory



Product Quality Certificate



★ Doublestar R&D Strength



★ Doublestar Drift Team



TS 16949



ISO9001



SNI



E4-30R



E4-117R



GCC



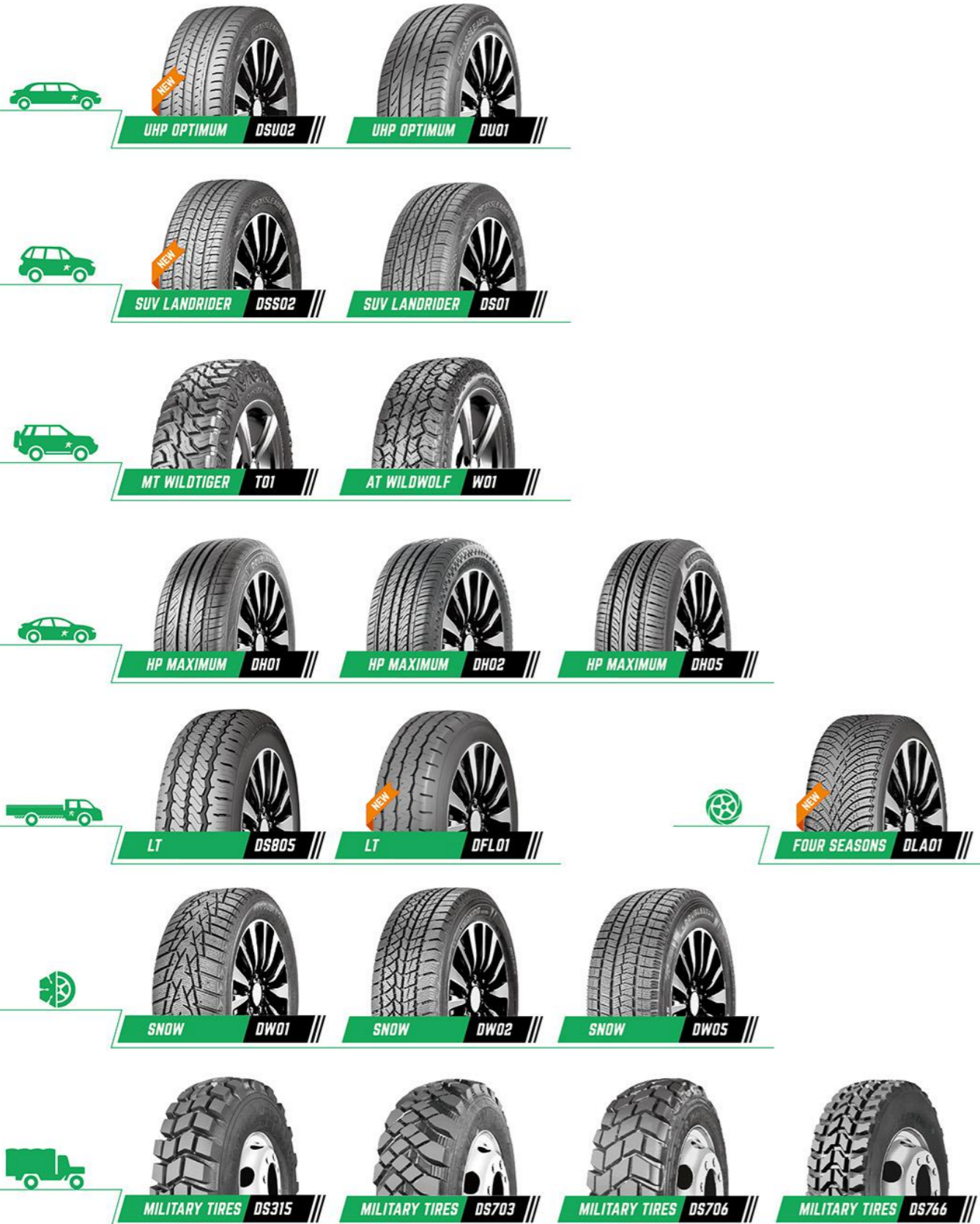
DOT



INMETRO



SASO



CONTENT

SERIAL PRODUCTS

| | |
|----------------|----|
| UHP | |
| DSU02 | 01 |
| DU01 | 03 |
| SUV | |
| DSS02 | 04 |
| DS01 / DS01T | 05 |
| MT / AT | |
| T01 | 06 |
| W01 | 07 |
| HP | |
| DH01 | 08 |
| DH02 | 09 |
| DH05 | 10 |
| LT / C | |
| DS805 | 11 |
| DLA01 | 12 |

MILITARY TIRES

| | |
|-------|----|
| DS315 | 16 |
| DS703 | 16 |
| DS706 | 17 |
| DS766 | 17 |

SNOW TIRES

| | |
|------|----|
| DW01 | 13 |
| DW02 | 14 |
| DW05 | 15 |

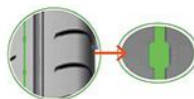


VEHICLE MODEL
LUXURY CAR
ROAD CONDITION
Urban Pavement

CROSSLEADER
DSU02



CHARACTERISTICS



Design of AFB silencing groove ensures comfort and quiet ride.



Pore-free sidewall design without bumps for nice appearance.



Four longitudinal groove and the inside open shoulder groove design, provide the excellent handling and drainage performance; and the braking distance of 100km is reduced by more than 7% on wetland.



Speed up to 100km/h in 4 seconds.



(Optional) Adding a layer of self-healing nano-smart material to the inner wall to ensure no air leaking after puncture.

| Rim | Tire Size | Load Index | Speed Grade | Load Range | Section Width (mm) | Overall Diameter (mm) | Tread Depth (mm) | Std.Rim | Standard Pressure (Kpa) |
|--------------|--------------|------------|-------------|------------|--------------------|-----------------------|------------------|---------|-------------------------|
| 24 | * 255/30ZR24 | 97 | W | XL | 260 | 764 | 8.0 | 9.0J | 290 |
| | * 265/40ZR22 | 106 | W | XL | 271 | 771 | 8.0 | 9.5J | 290 |
| 22 | * 265/35ZR22 | 102 | W | XL | 271 | 745 | 8.0 | 9.5J | 290 |
| | * 245/30ZR22 | 92 | W | XL | 248 | 707 | 8.0 | 8.5J | 290 |
| | * 235/30ZR22 | 90 | W | XL | 241 | 701 | 8.0 | 8.5J | 290 |
| 21 | * 275/45ZR21 | 110 | W | XL | 273 | 781 | 8.0 | 9.0J | 290 |
| | * 265/40ZR21 | 105 | W | XL | 271 | 745 | 8.0 | 9.5J | 290 |
| 20 | * 285/35ZR20 | 104 | W | XL | 290 | 708 | 8.0 | 10.0J | 290 |
| | * 285/30ZR20 | 99 | W | XL | 290 | 680 | 8.0 | 10.0J | 290 |
| | * 275/55R20 | 117 | W/V | XL | 284 | 810 | 8.0 | 8.5J | 290 |
| | * 275/45ZR20 | 106 | W | SL | 273 | 756 | 8.0 | 9.0J | 250 |
| | * 275/40ZR20 | 105 | W | XL | 278 | 703 | 8.0 | 9.5J | 290 |
| | * 275/35ZR20 | 102 | W | XL | 278 | 700 | 8.0 | 9.5J | 290 |
| | * 275/30ZR20 | 97 | W | XL | 278 | 674 | 8.0 | 9.5J | 290 |
| | * 265/50R20 | 111 | W/V | XL | 277 | 774 | 8.0 | 8.5J | 290 |
| | * 265/45ZR20 | 108 | W | XL | 266 | 746 | 8.0 | 9.0J | 290 |
| | * 265/35ZR20 | 99 | W | XL | 271 | 694 | 8.0 | 9.5J | 290 |
| | * 255/50R20 | 109 | W/V | XL | 265 | 764 | 8.0 | 8.0J | 290 |
| | * 255/40ZR20 | 101 | W | XL | 260 | 712 | 8.0 | 9.0J | 290 |
| | * 255/35ZR20 | 97 | W | XL | 260 | 686 | 8.0 | 9.0J | 290 |
| | * 245/50R20 | 105 | W/V | XL | 253 | 754 | 8.0 | 7.5J | 290 |
| | * 245/45ZR20 | 103 | W | XL | 243 | 728 | 8.0 | 8.0J | 290 |
| | * 245/40ZR20 | 99 | W | XL | 248 | 704 | 8.0 | 8.5J | 290 |
| | * 245/35ZR20 | 95 | W | XL | 248 | 680 | 8.0 | 8.5J | 290 |
| | * 245/30ZR20 | 90 | W | XL | 248 | 656 | 8.0 | 8.5J | 290 |
| * 235/35ZR20 | 92 | W | XL | 241 | 672 | 8.0 | 8.5J | 290 | |
| * 235/30ZR20 | 88 | W | XL | 241 | 650 | 8.0 | 8.5J | 290 | |
| * 225/35ZR20 | 90 | W | XL | 230 | 666 | 8.0 | 8.0J | 290 | |
| * 225/30ZR20 | 85 | W | XL | 230 | 644 | 8.0 | 8.0J | 290 | |
| 19 | * 285/40ZR19 | 107 | W | XL | 290 | 711 | 8.0 | 10.0J | 290 |
| | * 285/35ZR19 | 103 | W | XL | 290 | 683 | 8.0 | 10.0J | 290 |
| | * 275/45ZR19 | 108 | W | XL | 273 | 731 | 8.0 | 9.0J | 290 |
| | * 275/40ZR19 | 105 | W | XL | 278 | 703 | 8.0 | 9.5J | 290 |
| | * 275/35ZR19 | 100 | W | XL | 278 | 675 | 8.0 | 9.5J | 290 |
| | * 265/50R19 | 110 | W/V | XL | 277 | 749 | 8.0 | 8.5J | 290 |
| | * 265/35ZR19 | 98 | W | XL | 271 | 669 | 8.0 | 9.5J | 290 |
| | * 265/30ZR19 | 93 | W | XL | 271 | 643 | 8.0 | 9.5J | 290 |

* New product will be launched in the second quarter.

CROSSLEADER
DSU02



| Rim | Tire Size | Load Index | Speed Grade | Load Range | Section Width (mm) | Overall Diameter (mm) | Tread Depth (mm) | Std.Rim | Standard Pressure (Kpa) |
|--------------|-----------------|------------|-------------|------------|--------------------|-----------------------|------------------|---------|-------------------------|
| 19 | * 255/55R19 | 111 | W/V | XL | 265 | 763 | 8.0 | 8.0J | 290 |
| | * 255/50ZR19 | 107 | W | XL | 265 | 739 | 8.0 | 8.0J | 290 |
| | * 255/45ZR19 | 104 | W | XL | 255 | 713 | 8.0 | 8.5J | 290 |
| | * 255/40ZR19 | 100 | W | XL | 260 | 687 | 8.0 | 9.0J | 290 |
| | * 255/35ZR19 | 96 | W | XL | 260 | 661 | 8.0 | 9.0J | 290 |
| | * 245/55R19 | 103 | V | SL | 253 | 753 | 8.0 | 7.5J | 250 |
| | * 245/45ZR19 | 102 | W | XL | 243 | 703 | 8.0 | 8.0J | 290 |
| | * 245/40ZR19 | 98 | W | XL | 248 | 679 | 8.0 | 8.5J | 290 |
| | * 245/35ZR19 | 93 | W | XL | 248 | 655 | 8.0 | 8.5J | 290 |
| | * 235/55ZR19 | 105 | W | XL | 245 | 741 | 8.0 | 7.5J | 290 |
| | * 235/50R19(ZR) | 103 | W | XL | 245 | 719 | 8.0 | 7.5J | 290 |
| | * 235/40ZR19 | 96 | W | XL | 241 | 671 | 8.0 | 8.5J | 290 |
| | * 235/35ZR19 | 91 | W | XL | 241 | 647 | 8.0 | 8.5J | 290 |
| | * 225/45ZR19 | 96 | W | XL | 225 | 685 | 8.0 | 7.5J | 290 |
| * 225/40ZR19 | 93 | W | XL | 230 | 663 | 8.0 | 8.0J | 290 | |
| * 225/35ZR19 | 88 | W | XL | 230 | 641 | 8.0 | 8.0J | 290 | |
| 18 | * 275/40ZR18 | 103 | W | XL | 278 | 677 | 8.0 | 9.5J | 290 |
| | * 265/40ZR18 | 101 | W | XL | 271 | 669 | 8.0 | 9.5J | 290 |
| | * 265/35ZR18 | 97 | W | XL | 271 | 643 | 8.0 | 9.5J | 290 |
| | * 255/55R18 | 105 | V | SL | 265 | 737 | 8.0 | 8.0J | 250 |
| | * 255/45ZR18 | 103 | W | XL | 255 | 687 | 8.0 | 8.5J | 290 |
| | * 255/40ZR18 | 99 | W | XL | 260 | 661 | 8.0 | 9.0J | 290 |
| | * 255/35ZR18 | 94 | W | XL | 260 | 635 | 8.0 | 9.0J | 290 |
| | * 245/45ZR18 | 100 | W | XL | 243 | 677 | 8.0 | 8.0J | 290 |
| | * 245/40ZR18 | 97 | W | XL | 248 | 653 | 8.0 | 8.5J | 290 |
| | * 235/55R18 | 104 | W/V | XL | 245 | 715 | 8.0 | 7.5J | 290 |
| | * 235/50ZR18 | 101 | W | XL | 245 | 693 | 8.0 | 7.5J | 290 |
| | * 235/45ZR18 | 98 | W | XL | 236 | 669 | 8.0 | 8.0J | 290 |
| | * 235/40ZR18 | 95 | W | XL | 241 | 645 | 8.0 | 8.5J | 290 |
| | * 225/55R18 | 102 | W/V | XL | 233 | 705 | 8.0 | 7.0J | 290 |
| * 225/50R18 | 99 | W/V | XL | 233 | 683 | 8.0 | 7.0J | 290 | |
| * 225/45ZR18 | 95 | W | XL | 225 | 659 | 8.0 | 7.5J | 290 | |
| * 225/40ZR18 | 92 | W | XL | 230 | 637 | 8.0 | 8.0J | 290 | |
| * 215/45ZR18 | 93 | W | XL | 213 | 651 | 8.0 | 7.0J | 290 | |
| * 215/40ZR18 | 89 | W | XL | 218 | 629 | 8.0 | 7.5J | 290 | |
| * 215/35ZR18 | 84 | W | XL | 218 | 607 | 8.0 | 7.5J | 290 | |
| 17 | * 245/45ZR17 | 99 | W | XL | 243 | 652 | 8.0 | 8.0J | 290 |
| | * 245/40ZR17 | 95 | W | XL | 248 | 628 | 8.0 | 8.5J | 290 |
| | * 235/55R17 | 103 | W/V | XL | 245 | 690 | 8.0 | 7.5J | 290 |
| | * 235/50R17 | 100 | W/V | XL | 245 | 668 | 8.0 | 7.5J | 290 |
| | * 235/45ZR17 | 97 | W | XL | 236 | 644 | 8.0 | 8.0J | 290 |
| | * 225/55ZR17 | 97 | W | SL | 233 | 680 | 8.0 | 7.0J | 250 |
| | * 225/50ZR17 | 98 | W | XL | 233 | 658 | 8.0 | 7.0J | 290 |
| | * 225/45ZR17 | 94 | W | XL | 225 | 634 | 8.0 | 7.5J | 290 |
| | * 215/55R17 | 94 | V | SL | 226 | 668 | 8.0 | 7.0J | 250 |
| | * 215/50ZR17 | 95 | W | XL | 226 | 648 | 8.0 | 7.0J | 290 |
| | * 215/45ZR17 | 91 | W | XL | 213 | 626 | 8.0 | 7.0J | 290 |
| | * 215/40ZR17 | 87 | W | XL | 218 | 604 | 8.0 | 7.5J | 290 |
| | * 205/55R17 | 95 | W/V | XL | 214 | 658 | 8.0 | 6.5J | 290 |
| | * 205/50R17 | 89 | V | SL | 214 | 638 | 8.0 | 6.5J | 250 |
| * 205/45ZR17 | 88 | W | XL | 206 | 616 | 8.0 | 7.0J | 290 | |
| * 205/40ZR17 | 84 | W | XL | 212 | 596 | 8.0 | 7.5J | 290 | |
| 16 | * 225/55R16 | 99 | W/V | XL | 233 | 654 | 8.0 | 7.0J | 290 |
| | * 225/50R16 | 96 | W/V | XL | 233 | 632 | 8.0 | 7.0J | 290 |
| | * 215/55R16 | 97 | V | XL | 226 | 642 | 8.0 | 7.0J | 290 |
| | * 205/55R16 | 91 | V | SL | 214 | 632 | 8.0 | 6.5J | 250 |
| | * 205/45ZR16 | 87 | W | XL | 206 | 590 | 8.0 | 7.0J | 290 |



VEHICLE MODEL
LUXURY CAR
ROAD CONDITION
Urban Pavement

DU01



CHARACTERISTICS

- Four longitudinal grooves are engineered to greatly improve the drainage and grip on wet condition, meanwhile, helping deliver impressive handling performance.
- The inner and outer sides of the contact area are designed with the proportion of 45:55 to help balance the safety in wet condition and the cornering stability.
- Application of contacting print technology helps ensure the handling stability when cornering.
- Wider shoulder pattern design to guarantee the stability of longhaul driving or cornering.

| Rim | Tire Size | Load Index | Speed Grade | Load Range | Section Width (mm) | Overall Diameter (mm) | Tread Depth (mm) | Std. Rim | Standard Pressure (Kpa) | | | |
|---------------|----------------|------------|-------------|------------|--------------------|-----------------------|------------------|----------|-------------------------|----|---|---|
| 26 | * 305/30R26 | 109 | V | XL | 313 | 844 | 8.0 | 11.0J | 290 | / | / | / |
| 24 | * 305/35R24 | 112 | V | XL | 313 | 824 | 8.0 | 11.0J | 290 | / | / | / |
| 22 | 305/45R22 | 118 | V | XL | 303 | 833 | 8.0 | 10.0J | 290 | / | / | / |
| | 305/40R22 | 114 | V | XL | 313 | 803 | 8.0 | 11.0J | 290 | / | / | / |
| | 265/35R22 | 102 | V | XL | 271 | 745 | 8.0 | 9.5J | 290 | / | / | / |
| 21 | 295/35R21(ZR) | 103 | W | SL | 301 | 739 | 8.0 | 10.5J | 250 | / | / | / |
| 19 | 255/40R19(ZR) | 100 | W | XL | 260 | 687 | 8.0 | 8.0J | 290 | / | / | / |
| 18 | 245/50R18 | 100 | V | SL | 253 | 703 | 8.0 | 7.5J | 250 | 71 | C | C |
| | 245/45R18(ZR) | 96 | W | SL | 243 | 677 | 8.0 | 8.0J | 250 | 71 | C | C |
| | * 245/45R18RFT | 96 | W | SL | 243 | 677 | 8.0 | 8.0J | 250 | 71 | C | C |
| | 235/40R18(ZR) | 95 | W | XL | 241 | 645 | 8.0 | 8.5J | 290 | 72 | C | C |
| | 225/45R18(ZR) | 91 | W | SL | 225 | 659 | 8.0 | 7.5J | 250 | 72 | C | C |
| 17 | 245/45R17(ZR) | 95 | W | SL | 243 | 652 | 8.0 | 8.0J | 250 | 72 | C | C |
| | 235/50R17(ZR) | 96 | W | SL | 245 | 668 | 8.0 | 7.5J | 250 | 72 | C | C |
| | 235/45R17(ZR) | 97 | W | XL | 236 | 644 | 8.0 | 8.0J | 290 | 72 | C | C |
| | 225/45R17(ZR) | 91 | W | SL | 225 | 634 | 8.0 | 7.5J | 250 | 72 | C | C |
| | 225/45R17RFT | 91 | W | SL | 225 | 634 | 8.0 | 7.5J | 250 | 72 | C | C |
| | 225/50R17 | 94 | V | SL | 233 | 658 | 8.0 | 7.0J | 250 | 72 | C | C |
| | 225/50R17RFT | 94 | V | SL | 233 | 658 | 8.0 | 7.0J | 250 | 72 | C | C |
| | 225/55R17 | 97 | V | SL | 233 | 680 | 8.0 | 7.0J | 250 | 72 | C | C |
| | * 225/55R17RFT | 97 | W | SL | 233 | 680 | 8.0 | 7.0J | 250 | 72 | C | C |
| | 215/45R17(ZR) | 91 | W | XL | 213 | 626 | 8.0 | 7.0J | 290 | 72 | C | C |
| 215/50R17(ZR) | 91 | V | SL | 226 | 648 | 8.0 | 7.0J | 250 | 72 | C | C | |
| 215/55R17 | 94 | V | SL | 226 | 668 | 8.0 | 7.0J | 250 | 72 | C | C | |
| 205/40R17(ZR) | 84 | W | XL | 212 | 596 | 8.0 | 7.5J | 290 | 72 | C | C | |
| 16 | 215/60R16 | 99/95 | V | XL/SL | 221 | 664 | 8.0 | 6.5J | 290/250 | 71 | C | C |
| | 215/55R16 | 97 | V | XL | 226 | 642 | 8.0 | 7.0J | 290 | 72 | C | C |
| | 205/60R16 | 96/92 | V | XL/SL | 209 | 652 | 8.0 | 6.0J | 290/250 | 72 | C | C |
| | 205/55R16 | 91 | V | SL | 214 | 632 | 8.0 | 6.5J | 250 | 72 | C | C |
| | 195/60R16 | 89 | V | SL | 201 | 640 | 8.0 | 6.0J | 250 | 71 | C | C |
| 15 | 195/55R15 | 89/85 | V | XL/SL | 201 | 595 | 8.0 | 6.0J | 290/250 | 72 | C | C |
| | 195/60R15 | 92/88 | H | XL/SL | 201 | 615 | 8.0 | 6.0J | 290/250 | 71 | C | C |
| | 195/65R15 | 91 | V | SL | 201 | 635 | 8.0 | 6.0J | 250 | 71 | C | C |

* New product will be launched in the second quarter.



VEHICLE MODEL
SUV
ROAD CONDITION
Urban Pavement

CROSSLIDER DSS02



CHARACTERISTICS

- Herringbone shape steel sheet and reinforcing rib design improves the solid of the tread pattern, and improve braking performance by 5%.
- Pore-free sidewall design without bumps for nice appearance. Rolling resistance decreased by more than 10%, endurance enhance by 5%.
- Variable pitch pattern design, prevents the occurrence of resonance between the pattern block; and the noise is reduced by 15%.
- (Optional) Adding a layer of self-healing nano-smart material to the inner wall to ensure no air leaking after puncture.

| Rim | Tire Size | Load Index | Speed Grade | Load Range | Section Width (mm) | Overall Diameter (mm) | Tread Depth (mm) | Std. Rim | Standard Pressure (Kpa) |
|-----|-----------|------------|-------------|------------|--------------------|-----------------------|------------------|----------|-------------------------|
| 18 | 235/60R18 | 107 | H | XL | 240 | 739 | 8.0 | 7.0J | 290 |
| | 235/55R18 | 104 | V | XL | 245 | 715 | 8.0 | 7.5J | 290 |
| | 225/60R18 | 100 | H | SL | 228 | 727 | 8.0 | 6.5J | 250 |
| | 225/55R18 | 98 | V | SL | 233 | 705 | 8.0 | 7.0J | 250 |
| | 215/55R18 | 95 | H | SL | 226 | 693 | 8.0 | 7.0J | 250 |
| 17 | 265/65R17 | 112 | T | SL | 272 | 776 | 8.0 | 8.0J | 250 |
| | 245/65R17 | 111 | H | XL | 248 | 750 | 8.0 | 7.0J | 290 |
| | 235/65R17 | 108 | T | XL | 240 | 738 | 8.0 | 7.0J | 290 |
| | 235/55R17 | 103 | V | XL | 245 | 690 | 8.0 | 7.5J | 290 |
| | 225/65R17 | 102 | H | SL | 228 | 724 | 8.0 | 6.5J | 250 |
| | 225/60R17 | 99 | H | SL | 228 | 702 | 8.0 | 6.5J | 250 |
| | 215/60R17 | 96 | H | SL | 221 | 690 | 8.0 | 6.5J | 250 |
| 16 | 215/65R16 | 102 | H | XL | 221 | 686 | 8.0 | 6.5J | 290 |



VEHICLE MODEL
SUV
ROAD CONDITION
Urban Pavement

CROSSLIDER DS01/DS01T



CHARACTERISTICS

- Bonic leopard claw pattern design improves the handling safety by 10%.
- Main longitudinal grooves and oblique lateral grooves provide excellent high-speed and drainage performance. Thin grooves help improve stable grip.
- Semi-closed open shoulder is designed to provide quiet and comfortable ride experience.
- Design of optical and dynamic sidewall leads fashionable trend.
- (OPTIONAL) Design of shield shape on sidewall provides scratch resistance and strike resistance.

| Rim | Tire Size | Load Index | Speed Grade | Load Range | Section Width (mm) | Overall Diameter (mm) | Tread Depth (mm) | Std.Rim | Standard Pressure (Kpa) | | | |
|-----------|-----------------|------------|-------------|------------|--------------------|-----------------------|------------------|---------|-------------------------|----|---|---|
| 20 | 255/55R20 | 110 | V | XL | 265 | 788 | 8.4 | 8.0J | 290 | 72 | E | C |
| 19 | 255/50R19 | 103 | V | SL | 265 | 739 | 8.4 | 8.0J | 250 | 72 | E | C |
| | 245/45R19 | 98 | H | SL | 243 | 703 | 8.4 | 8.0J | 250 | 71 | E | C |
| | 245/55R19 | 103 | V/H | SL | 253 | 753 | 8.4 | 7.5J | 250 | 71 | E | C |
| | 235/50R19 | 103 | V | XL | 245 | 719 | 8.4 | 7.5J | 290 | 71 | E | C |
| 18 | 265/60R18 | 110 | H/T | SL | 272 | 775 | 8.4 | 8.0J | 250 | 72 | E | C |
| | 255/55R18 | 109/105 | V/H | SL | 265 | 737 | 8.4 | 8.0J | 250 | 72 | E | C |
| | 235/65R18 | 110/106 | H | XL/SL | 240 | 763 | 8.4 | 7.0J | 290/250 | 71 | E | C |
| | DS01T 235/60R18 | 107/103 | H | XL/SL | 240 | 739 | 8.4 | 7.0J | 290/250 | 71 | E | C |
| | 235/55R18 | 100 | V/H | SL | 245 | 715 | 8.4 | 7.5J | 250 | 71 | E | C |
| | 235/50R18 | 101/97 | V | XL/SL | 245 | 693 | 8.4 | 7.5J | 290/250 | 71 | E | C |
| | DS01T 225/60R18 | 100 | H/T | SL | 228 | 727 | 8.4 | 6.5J | 250 | 71 | E | C |
| | 225/55R18 | 98 | V/H | SL | 233 | 705 | 8.4 | 7.0J | 250 | 71 | E | C |
| 215/55R18 | 95 | H | SL | 226 | 693 | 8.4 | 7.0J | 250 | 71 | E | C | |
| 17 | 265/70R17 | 115 | H/S | SL | 272 | 804 | 8.7 | 8.0J | 250 | 72 | E | C |
| | 265/65R17 | 112 | T | SL | 272 | 776 | 8.4 | 8.0J | 250 | 72 | E | C |
| | 265/65R17 | 116 | H | XL | 272 | 776 | 8.4 | 8.0J | 290 | 72 | E | C |
| | 245/65R17 | 107 | T | SL | 248 | 750 | 8.4 | 7.0J | 250 | 71 | E | C |
| | 235/65R17 | 104 | H/T | SL | 240 | 738 | 8.4 | 7.0J | 250 | 71 | E | C |
| | 235/60R17 | 102 | H/T | SL | 240 | 714 | 8.7 | 7.0J | 250 | 71 | E | C |
| | 235/55R17 | 103/99 | V | XL/SL | 245 | 690 | 8.4 | 7.5J | 290/250 | 71 | E | C |
| | DS01T 225/65R17 | 102 | H/T | SL | 228 | 724 | 8.4 | 6.5J | 250 | 71 | E | C |
| | DS01T 225/60R17 | 99 | T | SL | 228 | 702 | 8.4 | 6.5J | 250 | 71 | E | C |
| | 225/55R17 | 101/97 | H | XL/SL | 233 | 680 | 8.4 | 7.0J | 290/250 | 71 | E | C |
| | 215/60R17 | 100 | H | XL | 221 | 690 | 8.4 | 6.5J | 290 | 71 | E | C |
| | 215/55R17 | 98/94 | V | XL/SL | 226 | 668 | 8.4 | 7.0J | 290/250 | 71 | E | C |
| 215/50R17 | 95 | V | XL | 226 | 648 | 8.4 | 7.0J | 290 | 71 | E | C | |
| 16 | 275/70R16 | 114 | H/S | SL | 279 | 792 | 8.7 | 8.0J | 250 | 72 | E | C |
| | 265/70R16 | 112 | T/H | SL | 272 | 778 | 8.7 | 8.0J | 250 | 72 | E | C |
| | 245/75R16 | 111 | S | SL | 248 | 774 | 8.7 | 7.0J | 250 | 71 | E | C |
| | 245/70R16 | 107 | S | SL | 248 | 750 | 8.7 | 7.0J | 250 | 71 | E | C |
| | 235/70R16 | 106 | S | SL | 240 | 736 | 8.7 | 7.0J | 250 | 71 | E | C |
| | 235/60R16 | 100 | H/T | SL | 240 | 688 | 8.4 | 7.0J | 250 | 71 | E | C |
| | 225/70R16 | 103 | S | SL | 228 | 722 | 8.7 | 6.5J | 250 | 71 | E | C |
| | 215/70R16LT | 108/106 | R | 8PR/D | 221 | 708 | 8.7 | 6.5J | 450 | 71 | E | C |
| | 215/70R16LT | 100/97 | R | 6PR/C | 221 | 708 | 8.7 | 6.5J | 350 | 71 | E | C |
| | 215/70R16 | 100 | S | SL | 221 | 708 | 8.7 | 6.5J | 250 | 71 | E | C |
| | 215/65R16 | 102 | H | XL | 221 | 686 | 8.4 | 6.5J | 290 | 71 | E | C |
| | 205/65R16 | 99/95 | H | XL/SL | 209 | 672 | 8.4 | 6.0J | 290/250 | 71 | E | C |
| | 205/60R16 | 96/92 | V | XL/SL | 209 | 652 | 8.4 | 6.0J | 290/250 | 71 | E | C |
| | 205/55R16 | 94 | H | XL | 214 | 632 | 8.4 | 6.5J | 290 | 71 | E | C |
| 205/55R16 | 91 | V | SL | 214 | 632 | 8.4 | 6.5J | 250 | 71 | E | C | |
| 15 | 235/75R15 | 109/105 | H/T | XL | 235 | 733 | 8.7 | 6.5J | 290 | 71 | E | C |
| | 225/75R15 | 106 | T | XL | 223 | 719 | 8.7 | 6.0J | 290 | 71 | E | C |
| | 215/75R15 | 100 | T | SL | 216 | 703 | 8.7 | 6.0J | 250 | 71 | E | C |



VEHICLE MODEL
PICK-UP
ROAD CONDITION
Mud

CROSSLIDER T01



CHARACTERISTICS

- Design of bionic tiger claw pattern is helpful to produce excellent mud performance.
- Shield-shaped sidewall design provides excellent scratch resistance.
- The design of high and low tread pattern makes it have excellent performance of removing mud and sand on tough road conditions with stronger driving force.
- The self-repairing technology ensures great puncture resistance.

| Rim | Tire Size | Load Index | Speed Grade | Load Range | Section Width (mm) | Overall Diameter (mm) | Tread Depth (mm) | Std.Rim | Standard Pressure (Kpa) |
|-----|----------------|------------|-------------|------------|--------------------|-----------------------|------------------|---------|-------------------------|
| 26 | *37×13.50R26LT | 117 | Q | 8PR/D | 345 | 928 | 15.5 | 11.0J | 450 |
| 22 | *37×13.50R22LT | 123 | Q | 10PR/E | 345 | 928 | 15.5 | 11.0J | 450 |
| | 35×12.50R22LT | 117 | Q | 10PR/E | 318 | 877 | 15.5 | 10.0J | 450 |
| 20 | *37×13.50R20LT | 127 | Q | 10PR/E | 318 | 928 | 15.5 | 10.0J | 450 |
| | 35×12.50R20LT | 121 | Q | 10PR/E | 318 | 877 | 15.5 | 10.0J | 450 |
| | 33×12.50R20LT | 114 | Q | 10PR/E | 318 | 826 | 15.5 | 10.0J | 450 |
| 18 | 35×12.50R18LT | 123 | Q | 10PR/E | 318 | 877 | 15.5 | 10.0J | 450 |
| | 33×12.50R18LT | 118 | Q | 10PR/E | 318 | 826 | 15.5 | 10.0J | 450 |
| | 235/60R18 | 103 | N | SL | 240 | 739 | 15.5 | 7.0J | 250 |
| 17 | *37×13.50R17LT | 121 | Q | 8PR/D | 345 | 928 | 15.5 | 11.0J | 350 |
| | 35×12.50R17LT | 121 | Q | 8PR/D | 318 | 877 | 15.5 | 10.0J | 350 |
| | 33×12.50R17LT | 120 | Q | 10PR/E | 318 | 826 | 15.5 | 10.0J | 450 |
| | 265/70R17LT | 118/115 | N | 8PR/D | 272 | 804 | 15.5 | 8.0J | 450 |
| | 265/65R17LT | 120/117 | N | 10PR/E | 272 | 776 | 15.5 | 8.0J | 550 |
| | 245/70R17LT | 114/110 | N | 8PR/D | 248 | 776 | 15.5 | 7.0J | 450 |
| 16 | 285/75R16LT | 122/119 | N | 8PR/D | 286 | 834 | 15.5 | 8.0J | 450 |
| | 265/75R16LT | 119/116 | N | 8PR/D | 267 | 804 | 15.5 | 7.5J | 450 |
| | 265/70R16LT | 117/114 | N | 8PR/D | 272 | 778 | 15.5 | 8.0J | 450 |
| | 245/75R16LT | 114/111 | N | 8PR/D | 248 | 774 | 15.5 | 7.0J | 450 |
| | 225/75R16LT | 110/107 | N | 8PR/D | 223 | 744 | 15.5 | 6.0J | 450 |
| 15 | 35×12.5R15LT | 113 | N | 6PR/C | 318 | 877 | 15.5 | 10.0J | 250 |
| | 33×12.5R15LT | 108 | N | 6PR/C | 318 | 826 | 15.5 | 10.0J | 250 |
| | 31×10.5R15LT | 109 | N | 6PR/C | 268 | 775 | 15.5 | 8.5J | 350 |
| | 30×9.5R15LT | 104 | N | 6PR/C | 240 | 750 | 15.5 | 7.5J | 350 |
| | 235/75R15LT | 110/107 | N | 8PR/D | 235 | 733 | 15.5 | 6.5J | 450 |
| | 215/75R15LT | 106/103 | N | 8PR/D | 216 | 703 | 15.5 | 6.0J | 450 |

* New product will be launched in the second quarter.

CROSSLIDER
W01



VEHICLE MODEL
4*4
ROAD CONDITION
All-terrain

CHARACTERISTICS



Bionic wolf claw pattern is designed to provide strong grip.



Convex sidewall design provides excellent scratch resistance.



Wider shoulder pattern design to guarantee the stability and safety of sharp turning and braking.



The self-repairing technology ensures great puncture resistance.

| Rim | Tire Size | Load Index | Speed Grade | Load Range | Section Width (mm) | Overall Diameter (mm) | Tread Depth (mm) | Std.Rim | Standard Pressure (Kpa) |
|-----|--------------|-------------|-------------|------------|--------------------|-----------------------|------------------|---------|-------------------------|
| 18 | 235/60R18 | 103 | T | SL | 240 | 739 | 11.5 | 7.0J | 250 |
| | 235/55R18 | 100 | T | SL | 245 | 715 | 11.5 | 7.5J | 250 |
| | 235/50R18 | 97 | T | SL | 245 | 693 | 11.5 | 7.5J | 250 |
| | 215/55R18 | 95 | T | SL | 226 | 693 | 11.5 | 7.0J | 250 |
| 17 | 265/65R17LT | 120/117 | R | 10PR/E | 272 | 776 | 12.0 | 8.0J | 550 |
| | 235/65R17 | 104 | T | SL | 240 | 738 | 11.5 | 7.0J | 250 |
| | 225/65R17 | 102 | T | SL | 228 | 724 | 11.5 | 6.5J | 250 |
| | 225/60R17 | 99 | T | SL | 228 | 702 | 11.5 | 6.5J | 250 |
| | 215/60R17 | 96 | T | SL | 221 | 690 | 11.5 | 6.5J | 250 |
| 16 | 265/70R16LT | 110/107 | R | 6PR/C | 272 | 778 | 12.0 | 8.0J | 350 |
| | 255/70R16LT | 108/104 | R | 6PR/C | 260 | 764 | 12.0 | 7.5J | 350 |
| | 245/75R16LT | 114/111 | R | 8PR/D | 248 | 774 | 11.5 | 7.0J | 450 |
| | 245/70R16LT | 113/110 | R | 8PR/D | 248 | 750 | 11.5 | 7.0J | 450 |
| | 225/75R16LT | 103/100 | R | 6PR/C | 223 | 744 | 11.5 | 6.0J | 350 |
| | 205/55R16 | 94 | T | XL | 214 | 632 | 9.0 | 6.5J | 290 |
| 15 | 31x10.5R15LT | 109 | R | 6PR/C | 268 | 775 | 12.0 | 8.5J | 350 |
| | 235/75R15LT | 110/107 | R | 8PR/D | 235 | 733 | 11.5 | 6.5J | 450 |
| | 215/75R15LT | 100/97 | R | 6PR/C | 216 | 703 | 11.5 | 6.0J | 350 |
| | 195/65R15 | 95 | T | XL | 201 | 635 | 9.0 | 6.0J | 290 |
| | 195/60R15 | 92 | T | XL | 201 | 615 | 9.0 | 6.0J | 290 |
| | 14 | 215/75R14LT | 98/95 | R | 6PR/C | 216 | 678 | 11.5 | 6.0J |

DH01



VEHICLE MODEL
CAR
ROAD CONDITION
Urban Pavement

CHARACTERISTICS



Streamline small groove design, low noise, quiet and comfortable.



Narrow distance between patterns is designed to deliver even wear and extend tire life.



Combination of center rib and kerf helps change the tread rigidity and improve ride comfort.



Both of tread and sidewall with appropriate hardness and softness have passed strict test, which can effectively avoid the vibration and noise of tire.

| Rim | Tire Size | Load Index | Speed Grade | Load Range | Section Width (mm) | Overall Diameter (mm) | Tread Depth (mm) | Std.Rim | Standard Pressure (Kpa) | 🔊 | 🔇 | 🛡️ |
|-----------|-----------|------------|-------------|------------|--------------------|-----------------------|------------------|---------|-------------------------|----|---|----|
| 17 | 215/45R17 | 91 | W | XL | 213 | 626 | 8.0 | 7.0J | 290 | 72 | E | C |
| | 215/50R17 | 95 | W | XL | 226 | 648 | 8.0 | 7.0J | 290 | 72 | E | C |
| | 215/55R17 | 98 | W/V | XL | 226 | 668 | 8.0 | 7.0J | 290 | 72 | E | C |
| 16 | 225/55R16 | 99 | V | XL | 233 | 654 | 8.0 | 7.0J | 290 | 72 | E | C |
| | 225/60R16 | 98 | H | SL | 228 | 676 | 8.0 | 6.5J | 250 | 71 | E | C |
| | 215/60R16 | 95 | V | SL | 221 | 664 | 8.0 | 6.5J | 250 | 71 | E | C |
| | 215/55R16 | 97 | V | XL | 226 | 642 | 8.0 | 7.0J | 290 | 72 | E | C |
| | 215/70R16 | 100 | H | SL | 221 | 708 | 8.0 | 6.5J | 250 | 71 | E | C |
| | 215/65R16 | 102/98 | H | XL/SL | 221 | 686 | 8.0 | 6.5J | 290/250 | 71 | E | C |
| | 205/55R16 | 91 | V | SL | 214 | 632 | 8.0 | 6.5J | 250 | 72 | E | C |
| 205/60R16 | 96 | V | XL | 209 | 652 | 8.0 | 6.0J | 290 | 72 | E | C | |
| 15 | 215/65R15 | 96 | V | SL | 221 | 661 | 8.0 | 6.5J | 250 | 71 | E | C |
| | 205/60R15 | 91 | H | SL | 209 | 627 | 8.0 | 6.0J | 250 | 71 | E | C |
| | 205/65R15 | 94 | H | SL | 209 | 647 | 8.0 | 6.0J | 250 | 71 | E | C |
| | 195/55R15 | 85 | V | SL | 201 | 595 | 8.0 | 6.0J | 250 | 72 | E | C |
| | 195/65R15 | 91 | H | SL | 201 | 635 | 8.0 | 6.0J | 250 | 71 | E | C |
| | 195/60R15 | 88 | H | SL | 201 | 615 | 8.0 | 6.0J | 250 | 71 | E | C |
| | 195/50R15 | 82 | V | SL | 201 | 577 | 8.0 | 6.0J | 250 | 72 | E | C |
| | 185/65R15 | 88 | H | SL | 189 | 621 | 8.0 | 5.5J | 250 | 70 | E | C |
| 185/60R15 | 84 | H | SL | 189 | 603 | 8.0 | 5.5J | 250 | 70 | E | C | |
| 14 | 185/60R14 | 82 | H | SL | 189 | 578 | 7.5 | 5.5J | 250 | 70 | E | C |
| | 185/65R14 | 86 | H | SL | 189 | 596 | 7.5 | 5.5J | 250 | 70 | E | C |
| | 175/70R14 | 84 | T | SL | 177 | 602 | 7.5 | 5.0J | 250 | 70 | E | C |



DH02



CHARACTERISTICS

- Tiny blocks with high density are designed to reduce noise due to tire vibration and help provide more comfortable and quiet ride experience.
- Combination of center rib and kerf helps change the tread rigidity and improve ride comfort.
- Lightweight profile design and application of new reinforced materials can decrease tire weight by 8%, which also help save fuel and protect environment.
- The tread is engineered with low rolling resistance formula, which also helps reduce fuel consumption and provide safe ride.
- Either of common sidewall and scratch-resistant sidewall could be selected to meet the varied requirements by different customers.

VEHICLE MODEL
CAR
ROAD CONDITION
Urban Pavement

| Rim | Tire Size | Load Index | Speed Grade | Load Range | Section Width (mm) | Overall Diameter (mm) | Tread Depth (mm) | Std. Rim | Standard Pressure (Kpa) | | | |
|-----|------------|------------|-------------|------------|--------------------|-----------------------|------------------|----------|-------------------------|----|---|---|
| 18 | 225/40ZR18 | 92 | W | XL | 230 | 637 | 7.7 | 8.0J | 290 | 71 | C | C |
| | 225/45ZR17 | 94 | W | XL | 225 | 634 | 7.7 | 7.5J | 290 | 71 | C | C |
| 16 | 215/60R16 | 95 | V | SL | 221 | 664 | 7.7 | 6.5J | 250 | 70 | C | C |
| | 205/55R16 | 94 | V | XL | 214 | 632 | 7.5 | 6.5J | 290 | 70 | C | C |
| 15 | 205/65R15 | 94 | H/V | SL | 209 | 647 | 7.7 | 6.0J | 250 | 70 | C | C |
| | 195/65R15 | 91 | H/V | SL | 201 | 635 | 7.7 | 6.0J | 250 | 70 | C | C |
| | 195/60R15 | 88 | H | SL | 201 | 615 | 7.7 | 6.0J | 250 | 70 | C | C |
| | 185/65R15 | 88 | H | SL | 189 | 621 | 7.7 | 5.5J | 250 | 70 | C | C |
| 14 | 205/70R14 | 98 | T | XL | 209 | 644 | 7.7 | 6.0J | 290 | 70 | C | C |
| | 195/70R14 | 91 | T | SL | 201 | 630 | 7.7 | 6.0J | 250 | 70 | C | C |
| | 185/70R14 | 88 | H/T | SL | 189 | 616 | 7.7 | 5.5J | 250 | 70 | C | C |
| | 185/65R14 | 86 | T | SL | 189 | 596 | 7.7 | 5.5J | 250 | 70 | C | C |
| | 185/60R14 | 82 | T | SL | 189 | 578 | 7.7 | 5.5J | 250 | 70 | C | C |
| | 175/65R14 | 82 | T | SL | 177 | 584 | 7.7 | 5.0J | 250 | 70 | C | C |



DH05



CHARACTERISTICS

- Knife-shaped groove pattern cuts off the water film and air flow; anti-wet and low noise.
- Optimized carcass outline design for driving quiet comfort.
- Formula with silicon ensures environment friendly requirement and avoids hydroplaning.
- The rolling resistance is 8% lower than common tires, saving about \$15 per year.

VEHICLE MODEL
CAR
ROAD CONDITION
Urban Pavement

| Rim | Tire Size | Load Index | Speed Grade | Load Range | Section Width (mm) | Overall Diameter (mm) | Tread Depth (mm) | Std. Rim | Standard Pressure (Kpa) | | | |
|-----------|-----------|------------|-------------|------------|--------------------|-----------------------|------------------|----------|-------------------------|----|---|---|
| 16 | 215/60R16 | 99 | H | XL | 221 | 664 | 7.5 | 6.5J | 290 | 71 | C | C |
| | 205/55R16 | 91 | V/H | SL | 214 | 632 | 7.5 | 6.5J | 250 | 71 | C | C |
| | 205/60R16 | 92 | V | SL | 209 | 652 | 7.5 | 6.0J | 250 | 71 | C | C |
| 15 | 205/70R15 | 96 | T | SL | 209 | 669 | 7.5 | 6.0J | 250 | 71 | C | C |
| | 205/60R15 | 95 | H | XL | 209 | 627 | 7.5 | 6.0J | 290 | 70 | C | C |
| | 205/65R15 | 94 | H | SL | 209 | 647 | 7.5 | 6.0J | 250 | 70 | C | C |
| | 195/55R15 | 85 | H | SL | 201 | 595 | 7.5 | 6.0J | 250 | 71 | C | C |
| | 195/65R15 | 91 | H/V | SL | 201 | 635 | 7.5 | 6.0J | 250 | 71 | C | C |
| | 195/60R15 | 88 | H | SL | 201 | 615 | 7.5 | 6.0J | 250 | 71 | C | C |
| | 195/50R15 | 86/82 | H/T | XL/SL | 201 | 577 | 7.5 | 6.0J | 290/250 | 71 | C | C |
| | 185/60R15 | 88/84 | H | XL/SL | 189 | 603 | 7.5 | 5.5J | 290/250 | 71 | C | C |
| | 185/65R15 | 88 | H | SL | 189 | 621 | 7.5 | 5.5J | 250 | 71 | C | C |
| 185/55R15 | 82 | H | SL | 194 | 585 | 7.5 | 6.0J | 250 | 71 | C | C | |
| 175/65R15 | 88 | H | XL | 177 | 609 | 7.5 | 5.0J | 290 | 71 | C | C | |
| 14 | 205/70R14 | 95 | T | SL | 209 | 644 | 7.5 | 6.0J | 250 | 71 | C | C |
| | 195/60R14 | 86 | H | SL | 201 | 590 | 7.5 | 6.0J | 250 | 71 | C | C |
| | 185/60R14 | 82 | H | SL | 189 | 578 | 7.5 | 5.5J | 250 | 70 | C | C |
| | 185/65R14 | 86 | H | SL | 189 | 596 | 8 | 5.5J | 250 | 70 | C | C |
| | 185/70R14 | 88 | T | SL | 189 | 616 | 7.5 | 5.5J | 250 | 70 | C | C |
| | 175/65R14 | 82 | H | SL | 177 | 584 | 7.5 | 5.0J | 250 | 70 | C | C |
| | 175/70R14 | 84 | T | SL | 177 | 602 | 7.5 | 5.0J | 250 | 70 | C | C |
| | 165/60R14 | 79 | T | XL | 170 | 554 | 7.2 | 5.0J | 290 | 70 | C | C |
| | 165/65R14 | 83/79 | T | XL/SL | 170 | 570 | 7.8 | 5.0J | 290/250 | 70 | C | C |
| | 165/70R14 | 81 | T | SL | 170 | 588 | 7.2 | 5.0J | 250 | 70 | C | C |
| 155/65R14 | 79/75 | T | XL/SL | 157 | 558 | 7.2 | 4.5J | 290/250 | 70 | C | C | |
| 13 | 185/70R13 | 86 | T | SL | 189 | 590 | 7.5 | 5.5B | 250 | 70 | C | C |
| | 175/70R13 | 82 | T | SL | 177 | 576 | 7.5 | 5.0B | 250 | 70 | C | C |
| | 175/60R13 | 77 | H | SL | 177 | 540 | 7.5 | 5.0B | 250 | 70 | C | C |
| | 165/70R13 | 79 | T | SL | 170 | 562 | 7.5 | 5.0B | 250 | 70 | C | C |
| | 165/65R13 | 77 | T | SL | 170 | 544 | 7.2 | 4.5B | 250 | 70 | C | C |
| | 155/70R13 | 75 | T | SL | 157 | 548 | 7.2 | 4.5B | 250 | 70 | C | C |
| | 155/65R13 | 73 | T | SL | 157 | 532 | 7.2 | 4.5B | 250 | 70 | C | C |



DS805



CHARACTERISTICS

- Stronger carcass construction helps effectively improve endurance and loading performance.
- At the time to enhance tire traction, confident to provide excellent drainage and improve wet-skid resistance.
- Wider central pattern block provides strong driving performance.

VEHICLE MODEL
LIGHT TRUCK
ROAD CONDITION
Pavement / Unpaved Road

| Rim | Tire Size | Load Index | Speed Grade | Load Range | Section Width (mm) | Overall Diameter (mm) | Tread Depth (mm) | Std.Rim | Standard Pressure (Kpa) |
|---------------|----------------|------------|-------------|------------|--------------------|-----------------------|------------------|---------|-------------------------|
| 16 | 7.50R16LT (TT) | 120/116 | N | 12PR/F | 215 | 805 | 10.0 | 6.0G | 670 |
| | 7.50R16LT (TL) | 120/116 | N | 12PR/F | 215 | 805 | 10.0 | 6.0J | 670 |
| | 7.00R16LT (TT) | 115/110 | N | 12PR/F | 200 | 775 | 10.0 | 5.5F | 670 |
| | 7.00R16LT (TL) | 115/110 | N | 12PR/F | 200 | 775 | 10.0 | 5.5J | 670 |
| | 6.50R16LT (TT) | 107/102 | N/M | 10PR/E | 185 | 750 | 10.0 | 5.5F | 560 |
| | 6.50R16LT (TL) | 107/102 | N/M | 10PR/E | 185 | 750 | 10.0 | 5.5J | 560 |
| | 6.50R16LT (TT) | 110/105 | M | 12PR/F | 185 | 750 | 10.0 | 5.5F | 670 |
| | 6.50R16LT (TL) | 110/105 | M | 12PR/F | 185 | 750 | 10.0 | 5.5F | 670 |
| | 205/85R16LT/C | 117/115 | L | 12PR/F | 215 | 805 | 10.0 | 6.0J | 670 |
| | 195/85R16LT/C | 114/112 | L | 12PR/F | 185 | 750 | 10.0 | 5.5J | 670 |
| 185/75R16LT/C | 104/102 | R | 8PR/D | 184 | 684 | 10.0 | 5.0J | 475 | |
| 185/75R16LT/C | 100/97 | R | 8PR/D | 184 | 684 | 10.0 | 5.0J | 450 | |
| 15 | 195/85R15LT/C | 113/112 | L | 8PR/D | 196 | 693 | 10.0 | 5.5J | 450 |
| | 195R15LT/C | 107/105 | Q/R | 8PR/D | 196 | 693 | 9.0 | 5.5J | 450 |
| | 195R15LT/C | 101/99 | Q/R | 6PR/C | 196 | 693 | 9.0 | 5.5J | 350 |
| | 185R15LT/C | 103/102 | Q/R | 8PR/D | 189 | 677 | 9.5 | 5.5J | 450 |
| | 185R15LT/C | 98/97 | Q/R | 6PR/C | 189 | 677 | 9.5 | 5.5J | 350 |
| 14 | 205R14LT/C | 109/107 | N | 8PR/D | 208 | 684 | 9.5 | 6.0J | 450 |
| | 205R14LT/C | 105/103 | N | 6PR/C | 208 | 684 | 9.5 | 6.0J | 375 |
| | 195R14LT/C | 105/103 | N | 8PR/D | 196 | 668 | 9.0 | 5.5J | 450 |
| | 195R14LT/C | 100/99 | N | 6PR/C | 196 | 668 | 9.0 | 5.5J | 350 |
| | 185R14LT/C | 97/95 | S | 6PR/C | 188 | 650 | 9.5 | 5.5J | 350 |
| | 185R14LT/C | 102/100 | R | 8PR/D | 188 | 650 | 9.5 | 5.5J | 450 |
| | 165R14LT/C | 96/95 | R/S | 8PR/D | 167 | 622 | 7.5 | 4.5J | 450 |
| | 165R14LT/C | 91/90 | R/S | 6PR/C | 167 | 622 | 7.5 | 4.5J | 350 |
| 13 | 175R13LT/C | 97/95 | R | 8PR/D | 177 | 610 | 8.0 | 5.0B | 450 |
| | 165R13LT/C | 94/92 | S | 8PR/D | 167 | 596 | 7.5 | 4.5B | 450 |
| | 165/70R13LT/C | 88/86 | S | 6PR/C | 170 | 562 | 7.0 | 5.0B | 375 |
| | 165/70R13LT/C | 94/92 | S | 8PR/D | 170 | 562 | 7.0 | 5.0B | 450 |
| | 155R13LT/C | 90/88 | N/S | 8PR/D | 157 | 578 | 7.0 | 4.5B | 450 |
| 155R13LT/C | 85/83 | N/S | 6PR/C | 157 | 578 | 7.0 | 4.5B | 350 | |
| 12 | 155R12LT/C | 88/86 | N | 8PR/D | 157 | 550 | 7.0 | 4.5B | 450 |
| | 155R12LT/C | 83/81 | P/N | 6PR/C | 157 | 550 | 7.0 | 4.5B | 350 |



DLA01



CHARACTERISTICS

- Design of single guide pattern groove provide excellent high speed handling performance in straight line.
- Design of thin sipes pattern on shoulder provide quiet and comfortable ride experience.
- The capillary groove structure provides better performance of braking and handling to ensure the safety of the four seasons.
- Multi-chip mold without porosity design for nice appearance.

VEHICLE MODEL
CAR
ROAD CONDITION
All-terrain

| Rim | Tire Size | Load Index | Speed Grade | Load Range | Section Width (mm) | Overall Diameter (mm) | Tread Depth (mm) | Std.Rim | Standard Pressure (Kpa) |
|-----|-------------|------------|-------------|------------|--------------------|-----------------------|------------------|---------|-------------------------|
| 18 | * 245/45R18 | 96 | W | SL | 243 | 677 | 8.0 | 8.0J | 250 |
| | * 225/45R18 | 95 | W | XL | 225 | 659 | 8.0 | 7.5J | 290 |
| 17 | * 235/45R17 | 97 | W | XL | 236 | 644 | 8.0 | 8.0J | 290 |
| | 225/45R17 | 94 | W | XL | 225 | 634 | 8.0 | 7.5J | 290 |

* New product will be launched in the third quarter.



DW01



CHARACTERISTICS

- The bionic design of wall lizard feet improves the adhesion of the ice and snow surface, with superior driving performance.
- The unique "V" pattern design of central rib improves the stability of straight driving on the snow and ice road, ensuring the safety of driving.
- Ultra-low temperature compound keeps tire soft even at 70°C below zero, improving the grip on ice road
- The tread with nails shortens the ice brake distance by 5%, and the snowfield brake distance by 2%.

VEHICLE MODEL
CAR
ROAD CONDITION
Snow

| Rim | Tire Size | Load Index | Speed Grade | Load Range | Section Width (mm) | Overall Diameter (mm) | Tread Depth (mm) | Std. Rim | Standard Pressure (Kpa) | | | |
|-----|-------------|------------|-------------|------------|--------------------|-----------------------|------------------|----------|-------------------------|----|---|---|
| 17 | * 225/65R17 | 102 | T | SL | 228 | 724 | 10.0 | 6.5J | 250 | / | / | / |
| | * 225/60R17 | 99 | T | SL | 228 | 702 | 10.0 | 6.5J | 250 | / | / | / |
| | * 225/55R17 | 97 | T | SL | 233 | 680 | 10.0 | 7.0J | 250 | / | / | / |
| | * 225/50R17 | 98 | T | XL | 233 | 658 | 10.0 | 7.0J | 290 | / | / | / |
| | 215/55R17 | 94 | T | SL | 226 | 668 | 10.0 | 7.0J | 250 | 71 | E | C |
| | * 215/50R17 | 95 | T | XL | 226 | 648 | 10.0 | 7.0J | 290 | / | / | / |
| 16 | 215/65R16 | 98 | T | SL | 221 | 686 | 10.0 | 6.5J | 250 | 71 | E | C |
| | * 215/60R16 | 95 | T | SL | 221 | 664 | 10.0 | 6.5J | 250 | / | / | / |
| | * 205/60R16 | 92 | T | SL | 209 | 652 | 10.0 | 6.0J | 250 | / | / | / |
| | 205/55R16 | 91 | T | SL | 214 | 632 | 10.0 | 6.5J | 250 | 71 | E | C |
| | * 205/70R15 | 96 | T | SL | 209 | 669 | 10.0 | 6.0J | 250 | / | / | / |
| 15 | * 205/65R15 | 94 | T | SL | 209 | 647 | 10.0 | 6.0J | 250 | / | / | / |
| | 195/65R15 | 91 | T | SL | 201 | 635 | 10.0 | 6.0J | 250 | 71 | E | C |
| | * 195/60R15 | 88 | T | SL | 201 | 615 | 10.0 | 6.0J | 250 | / | / | / |
| | * 195/55R15 | 85 | T | SL | 201 | 595 | 10.0 | 6.0J | 250 | / | / | / |
| | 185/65R15 | 88 | T | SL | 189 | 621 | 10.0 | 5.5J | 250 | 70 | E | C |
| | * 185/60R15 | 84 | T | SL | 189 | 603 | 10.0 | 5.5J | 250 | / | / | / |
| | * 185/70R14 | 88 | T | SL | 189 | 616 | 10.0 | 5.5J | 250 | / | / | / |
| | * 185/65R14 | 86 | T | SL | 189 | 596 | 10.0 | 5.5J | 250 | / | / | / |
| 14 | 185/60R14 | 82 | T | SL | 189 | 578 | 10.0 | 5.5J | 250 | 70 | E | C |
| | * 175/65R14 | 82 | T | SL | 177 | 584 | 10.0 | 5.0J | 250 | / | / | / |
| | * 175/70R13 | 79 | T | SL | 177 | 576 | 10.0 | 5.0J | 250 | / | / | / |
| | | | | | | | | | | | | |

* New product will be launched in the second quarter.



DW02



CHARACTERISTICS

- The non-symmetrical pattern improves the stability when cornering. The specific pattern design of both sides helps remove ice and snow.
- 3D kerf is designed to help break the water film and improve the grip.
- Application of ultra low temperature formula helps ensure the softness of tire and driving safety under -70°C condition.
- Design of shield-shaped sidewall features scratch resistance on ice and enhanced grip in snow.

VEHICLE MODEL
HP/SUV
ROAD CONDITION
Snow

| Rim | Tire Size | Load Index | Speed Grade | Load Range | Section Width (mm) | Overall Diameter (mm) | Tread Depth (mm) | Std. Rim | Standard Pressure (Kpa) |
|-----|-----------|------------|-------------|------------|--------------------|-----------------------|------------------|----------|-------------------------|
| 19 | 255/55R19 | 111 | T | XL | 265 | 763 | 9.0 | 8.0J | 290 |
| | 255/50R19 | 107 | T | XL | 265 | 739 | 9.0 | 8.0J | 290 |
| | 245/55R19 | 103 | T | SL | 253 | 753 | 9.0 | 7.5J | 250 |
| | 235/55R19 | 101 | S | SL | 245 | 741 | 9.0 | 7.5J | 250 |
| | 225/55R19 | 99 | T | SL | 233 | 731 | 9.0 | 7.0J | 250 |
| 18 | 245/60R18 | 105 | S | SL | 248 | 751 | 9.0 | 7.0J | 250 |
| | 245/45R18 | 96 | T | SL | 243 | 677 | 9.0 | 8.0J | 250 |
| | 235/60R18 | 103 | T | SL | 240 | 739 | 13.5 | 7.0J | 250 |
| | 235/55R18 | 100 | S | SL | 245 | 715 | 9.0 | 7.5J | 250 |
| | 235/50R18 | 97 | S | SL | 245 | 693 | 8.4 | 7.5J | 250 |
| | 225/60R18 | 100 | S | SL | 228 | 727 | 9.0 | 6.5J | 250 |
| | 225/55R18 | 98 | S | SL | 233 | 705 | 8.4 | 7.0J | 250 |
| | 215/55R18 | 95 | S | SL | 226 | 693 | 9.0 | 7.0J | 250 |
| 17 | 265/65R17 | 112 | S | SL | 272 | 776 | 9.0 | 8.0J | 250 |
| | 235/65R17 | 108 | T | XL | 240 | 738 | 10.0 | 7.0J | 290 |
| | 235/60R17 | 102 | S | SL | 240 | 714 | 9.0 | 7.0J | 250 |
| | 235/55R17 | 99 | S | SL | 245 | 690 | 9.0 | 7.5J | 250 |
| | 235/45R17 | 94 | T | SL | 236 | 644 | 8.5 | 8.0J | 250 |
| | 225/65R17 | 102 | T | SL | 228 | 724 | 10.0 | 6.5J | 250 |
| | 225/65R17 | 106 | T | XL | 228 | 724 | 10.0 | 6.5J | 290 |
| | 225/60R17 | 99 | T | SL | 228 | 702 | 10.0 | 6.5J | 250 |
| | 225/55R17 | 97 | T | SL | 233 | 680 | 8.5 | 7.0J | 250 |
| | 225/50R17 | 94 | T | SL | 233 | 658 | 8.5 | 7.0J | 250 |
| | 225/45R17 | 90 | T | SL | 225 | 634 | 9.0 | 7.5J | 250 |
| | 215/60R17 | 100/96 | T | XL/SL | 221 | 690 | 8.4 | 6.5J | 290 |
| 16 | 215/55R17 | 94 | S | SL | 226 | 668 | 8.0 | 7.0J | 250 |
| | 215/50R17 | 91 | T | SL | 226 | 648 | 9.0 | 7.0J | 250 |
| | 245/75R16 | 111 | S | SL | 248 | 774 | 9.0 | 7.0J | 250 |
| | 245/70R16 | 107 | S | SL | 248 | 750 | 9.0 | 7.0J | 250 |
| | 235/70R16 | 106 | T | SL | 240 | 736 | 10.0 | 7.0J | 250 |
| | 225/55R16 | 95 | T | SL | 233 | 654 | 8.5 | 7.0J | 250 |
| | 215/70R16 | 100 | T | SL | 221 | 708 | 9.0 | 6.5J | 250 |
| | 215/65R16 | 98 | T | SL | 221 | 686 | 8.0 | 6.5J | 250 |
| | 215/60R16 | 95 | S | SL | 221 | 664 | 9.0 | 6.5J | 250 |
| | 215/55R16 | 93 | T | SL | 226 | 642 | 8.0 | 7.0J | 250 |
| | 205/60R16 | 92 | S | SL | 209 | 652 | 8.0 | 6.0J | 250 |
| 15 | 205/55R16 | 91 | T | SL | 214 | 632 | 9.0 | 6.5J | 250 |
| | 195/60R16 | 89 | S | SL | 201 | 640 | 9.0 | 6.0J | 250 |
| | 195/55R16 | 87 | S | SL | 201 | 620 | 9.0 | 6.0J | 250 |
| | 235/75R15 | 105 | T | SL | 235 | 733 | 10.0 | 6.5J | 250 |
| | 225/75R15 | 102 | T | SL | 223 | 719 | 10.0 | 6.0J | 250 |
| | 215/75R15 | 100 | S | SL | 216 | 703 | 8.7 | 6.0J | 250 |
| | 215/70R15 | 98 | S | SL | 221 | 683 | 9.0 | 6.5J | 250 |
| | 205/65R15 | 94 | T | SL | 209 | 647 | 9.0 | 6.0J | 250 |
| | 195/65R15 | 91 | T | SL | 201 | 635 | 9.0 | 6.0J | 250 |
| | 195/60R15 | 88 | T | SL | 201 | 615 | 9.0 | 6.0J | 250 |
| | 195/55R15 | 85 | T | SL | 201 | 595 | 8.5 | 6.0J | 250 |
| | 185/65R15 | 88 | T | SL | 189 | 621 | 8.0 | 5.5J | 250 |
| | 185/60R15 | 84 | S | SL | 189 | 603 | 9.0 | 5.5J | 250 |
| 14 | 185/70R14 | 88 | T | SL | 189 | 616 | 8.0 | 5.5J | 250 |
| | 185/60R14 | 82 | T | SL | 189 | 578 | 8.0 | 5.5J | 250 |
| | 175/70R14 | 84 | T | SL | 177 | 602 | 7.5 | 5.0J | 250 |
| | 175/65R14 | 82 | T | SL | 177 | 584 | 7.5 | 5.0J | 250 |



DW05



CHARACTERISTICS

- Snow shovel on shoulder is designed to enhance ice-breaking capability and ensure the maximum traction in icy and snowy condition.
- Water suction bag is designed to store and evacuate the water rapidly so as to enhance the ice and snow performance.
- Design of 3D kerf and tiny grooves helps break the water film on ice and ensure the driving safety in icy condition.
- The zigzag design of tire edge can effectively remove the ice water film and improve the stability.

VEHICLE MODEL
CAR
ROAD CONDITION
Snow

| Rim | Tire Size | Load Index | Speed Grade | Load Range | Section Width (mm) | Overall Diameter (mm) | Tread Depth (mm) | Std.Rim | Standard Pressure (kPa) |
|-----|----------------|------------|-------------|------------|--------------------|-----------------------|------------------|---------|-------------------------|
| 19 | 235/55R19 | 101 | T | SL | 245 | 741 | 9.0 | 7.5J | 250 |
| 18 | 235/50R18 | 97 | T | SL | 245 | 693 | 9.0 | 7.5J | 250 |
| | 235/55R18 | 100 | T | SL | 245 | 715 | 9.0 | 7.5J | 250 |
| 17 | 245/55R17 | 102 | T | SL | 253 | 702 | 8.0 | 7.5J | 250 |
| | 225/65R17 | 102 | T | SL | 228 | 724 | 10.0 | 6.5J | 250 |
| 16 | 215/75R16C(LT) | 107/104 | R | 8PR/D | 216 | 728 | 8.0 | 6.0J | 450 |
| | 205/65R16C(LT) | 107/105 | T | 8PR/D | 209 | 672 | 8.0 | 6.0J | 475 |
| | 205/55R16 | 91 | H/T | SL | 214 | 632 | 8.0 | 6.5J | 250 |
| | 195/60R16 | 89 | T | SL | 201 | 640 | 9.0 | 6.0J | 250 |
| 15 | 215/70R15C(LT) | 104/101 | R | 8PR/D | 221 | 683 | 8.0 | 6.5J | 350 |
| | 195/70R15C(LT) | 104/101 | R | 10PR/E | 201 | 655 | 8.0 | 6.0J | 550 |
| | 195R15C(LT) | 106/104 | R | 8PR/D | 196 | 693 | 8.0 | 5.5J | 450 |
| | 195/65R15 | 95 | T | XL | 201 | 635 | 8.0 | 6.0J | 290 |
| | 185/65R15 | 88 | H | SL | 189 | 621 | 8.0 | 5.5J | 250 |
| 14 | 195/60R14 | 86 | T | SL | 201 | 590 | 8.0 | 6.0J | 250 |
| | 185R14C(LT) | 102/100 | R | 8PR/D | 189 | 652 | 8.0 | 5.5J | 450 |
| | 175/70R14 | 84 | T | SL | 177 | 602 | 8.0 | 5.0J | 250 |



DS315

CHARACTERISTICS

- Tread pattern helps enhance tire grip on unpaved road, the big off-road pattern can perform strong grip in muddy condition.
- Open type grooves deliver excellent performance including outstanding self-cleaning, impressive driving, strong traction, improved trafficability and braking.

VEHICLE MODEL
MILITARY
ROAD CONDITION
Pavement / Unpaved Road

| Tire Size | Tread Depth | | Std.Rim | Section Width mm | Overall Diameter mm | Load Capacity(kg) | | Std.Cold infl.Press.(kPa) | |
|-----------|-------------|--------|---------|---------------------|------------------------|-------------------|------------|---------------------------|------------|
| | mm | 1/32in | | | | Road | Cross road | Road | Cross road |
| 11R18 | 22.0 | 27.7 | 9.0-18 | 290 | 1000 | 1800 | 1600 | 450 | 350 |



DS703

CHARACTERISTICS

- V Shaped off-road pattern designed for special off-road vehicle helps provide excellent grip in soft and wet road condition.
- Perfect trafficability, traction and braking.

VEHICLE MODEL
MILITARY
ROAD CONDITION
Pavement / Unpaved Road

| Tire Size | Tread Depth | | Std.Rim | Section Width mm | Overall Diameter mm | Load Capacity(kg) | | Std.Cold infl.Press.(kPa) | |
|-----------|-------------|--------|---------|---------------------|------------------------|-------------------|------------|---------------------------|------------|
| | mm | 1/32in | | | | Road | Cross road | Road | Cross road |
| 12R20(TT) | 22.0 | 27.7 | 9.0-20 | 345 | 1120 | 2000 | 1800 | 450 | 350 |
| 12R20(TL) | 22.0 | 27.7 | 9.0-20 | 345 | 1120 | 2000 | 1800 | 450 | 350 |



DS706

CHARACTERISTICS



Excellent comprehensive performance, optimized balance for high wear resistance, safety and economy.



Perfect performance combination for accurate steering, excellent braking and great handling.

VEHICLE MODEL

MILITARY

ROAD CONDITION

Pavement / Unpaved Road

| Tire Size | Tread Depth | | Std.Rim | Section Width mm | Overall Diameter mm | Load Capacity(kg) | | Std.Cold infl.Press.(kPa) | |
|-------------|-------------|--------|---------|---------------------|------------------------|-------------------|------------|---------------------------|------------|
| | mm | 1/32in | | | | Road | Cross road | Road | Cross road |
| 12.5R20(TT) | 22.0 | 27.7 | 9.0-20 | 365 | 1120 | 2200 | 2000 | 450 | 350 |
| 12.5R20(TL) | 22.0 | 27.7 | 9.0-20 | 365 | 1120 | 2200 | 2000 | 450 | 350 |



DS766

CHARACTERISTICS



Suitable for military vehicles, to help the vehicle run at high speed in good road condition and ensure high trafficability in severe road condition.



The longitudinal grooves are taken as main running surface and make the transversal grooves more narrow, which help improve the high speed performance.

VEHICLE MODEL

MILITARY

ROAD CONDITION

Pavement / Unpaved Road

| Tire Size | Tread Depth | | Std.Rim | Section Width mm | Overall Diameter mm | Load Capacity(kg) | | Std.Cold infl.Press.(kPa) | |
|--------------|-------------|--------|---------|---------------------|------------------------|-------------------|------------|---------------------------|------------|
| | mm | 1/32in | | | | Road | Cross road | Road | Cross road |
| 37×12.5R16.5 | 14.5 | 18.3 | 8.25 | 315 | 927.6 | \ | 1750 | \ | 350 |

TIRE MANAGEMENT

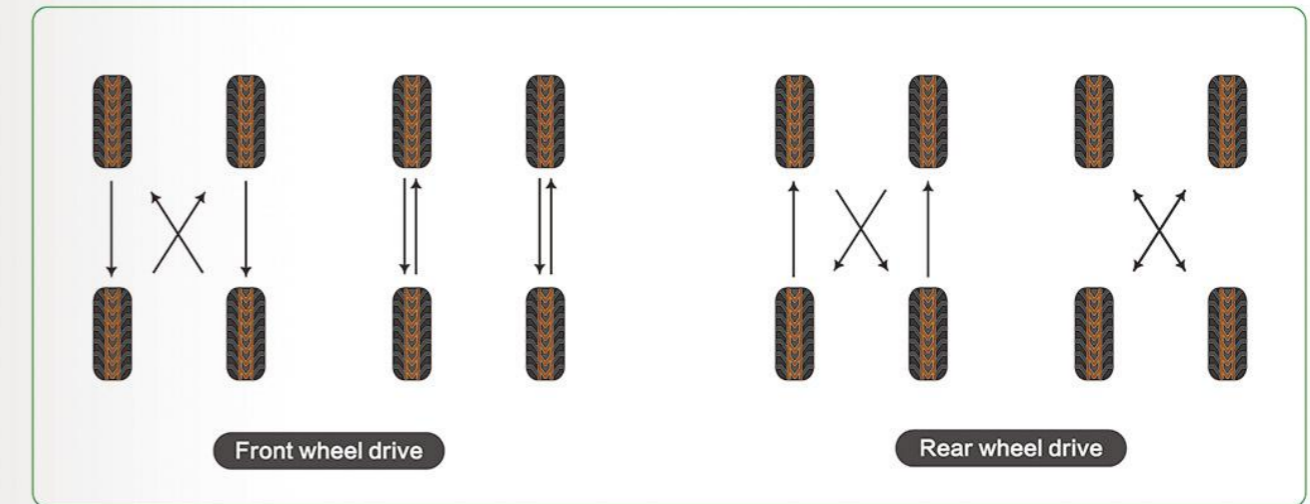
TIPS

When detecting the abnormal wear of tire, the tire must be replaced immediately, every 10000 km tire transposition.

Special attention should be paid to the snow tire.

THE ADVANTAGES OF TIRE TRANSPOSITION

1. Prevent abnormal wear and life extension of the tire.
2. Detect tire damage caused by vehicles in use.
3. Improve the ride comfort and safety.



INFLATION PRESSURE

The best inflation pressure is one of the most important aspects of the protection of the tire.

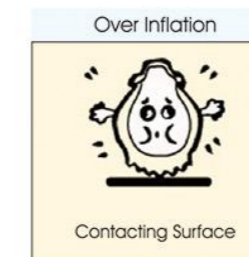
The internal pressure due to tire tread uniform ground contact, and prevent abnormal wear.

Rolling resistance by reducing, and quickly spread the heat generated, so that the internal heat levels are maintained at a stable level.



THE CORRECT PRESSURE

The appropriate pressure, can ensure the tire in the running process of the best ground, prolong the service life of the tire.



THE PRESSURE IS TOO LARGE

The tire more easily influenced by external factors in the process of moving (pits, and other debris). Speed the wear of the tread center part.



INSUFFICIENT AIR PRESSURE

Fever injury caused by the lateral excessive bending of the sidewall, and cause the abnormal wear of the tire shoulder. Rolling resistance increased, reduced the fuel economy of the vehicle.